



**LION ROCK**  
RESOURCES INC.

# South Dakota's Most Exciting High-Grade Gold-Lithium Explorer

Corporate Presentation – February 2026

TSXV:ROAR | FSE: KGB | OTCQB:LRRIF



# Forward-Looking Statements

Certain statements contained herein may constitute “forward-looking information” within the meaning of Canadian securities legislation. Forward-looking information is often, but not always, identified by the use of words such as “anticipate”, “plan”, “estimate”, “expect”, “may”, “will”, “intend”, “should”, “potential”, “indicative” and similar expressions. Forward-looking information involves known and unknown risks, uncertainties and other factors that may cause actual results or events to differ materially from those anticipated in such forward-looking information. Such forward-looking information is based on the current expectations of management of the Company. The Company’s actual results could differ materially from those anticipated in this forward-looking information as a result of risks and uncertainties, including without limitation risks and uncertainties inherent in the exploration and development of mineral properties, fluctuations in commodity prices, counterparty risk, market conditions, regulatory decisions, competitive factors in the industries in which the Company operates, prevailing economic conditions, changes to the Company’s strategic growth plans, and other factors, many of which are beyond the control of the Company. The Company believes that the expectations reflected in the forward-looking information are reasonable, but no assurance can be given that these expectations will prove to be correct and such forward-looking information should not be unduly relied upon. In making the forward-looking statements herein, the Company has applied several material assumptions. Any forward-looking information contained herein represents the Company’s expectations as of the date of publication and is subject to change after such date. The Company disclaims any intention or obligation to update or revise any forward-looking information whether as a result of new information, future events or otherwise, except as required by applicable securities legislation.

The technical content of this news release has been reviewed and approved by Carl Ginn, P.Geo., consultant to the Company and a Qualified Person pursuant to National Instrument 43-101.



# A Premier High-Grade Gold-Lithium Explorer in South Dakota's Black Hills



## High-Grade Gold & Lithium Potential

**Gold up to 18.2 g/t Au over 18m, lithium up to 5.4% Li<sub>2</sub>O** with multiple underexplored zones with expansion potential



## Untapped Exploration Upside

**Shear-hosted gold system spans over 1.6km** and Giant Volney lithium pegmatite open for expansion



## Private Land = Fast-Track Permitting

**142 ha of private land accelerates exploration** and avoids federal permitting delays for quicker drill execution



## Experienced Leadership

**Strong track record in discoveries and financings** with expertise in gold, lithium, and strategic metals



## Proven Mining District, Strong Neighbors

Surrounded by major producers with **Homestake (43.9M oz Au), Coeur Mining, and Dakota Gold** are nearby



## Major Catalysts Ahead in 2026

**Assays pending in from 3,600 m** Phase 1 drill program complete. Phase 2 drill program planned in Q1 2026.



THE EMERGING TINTON DISTRICT


# Strategically Positioned in a World-Class Mining District

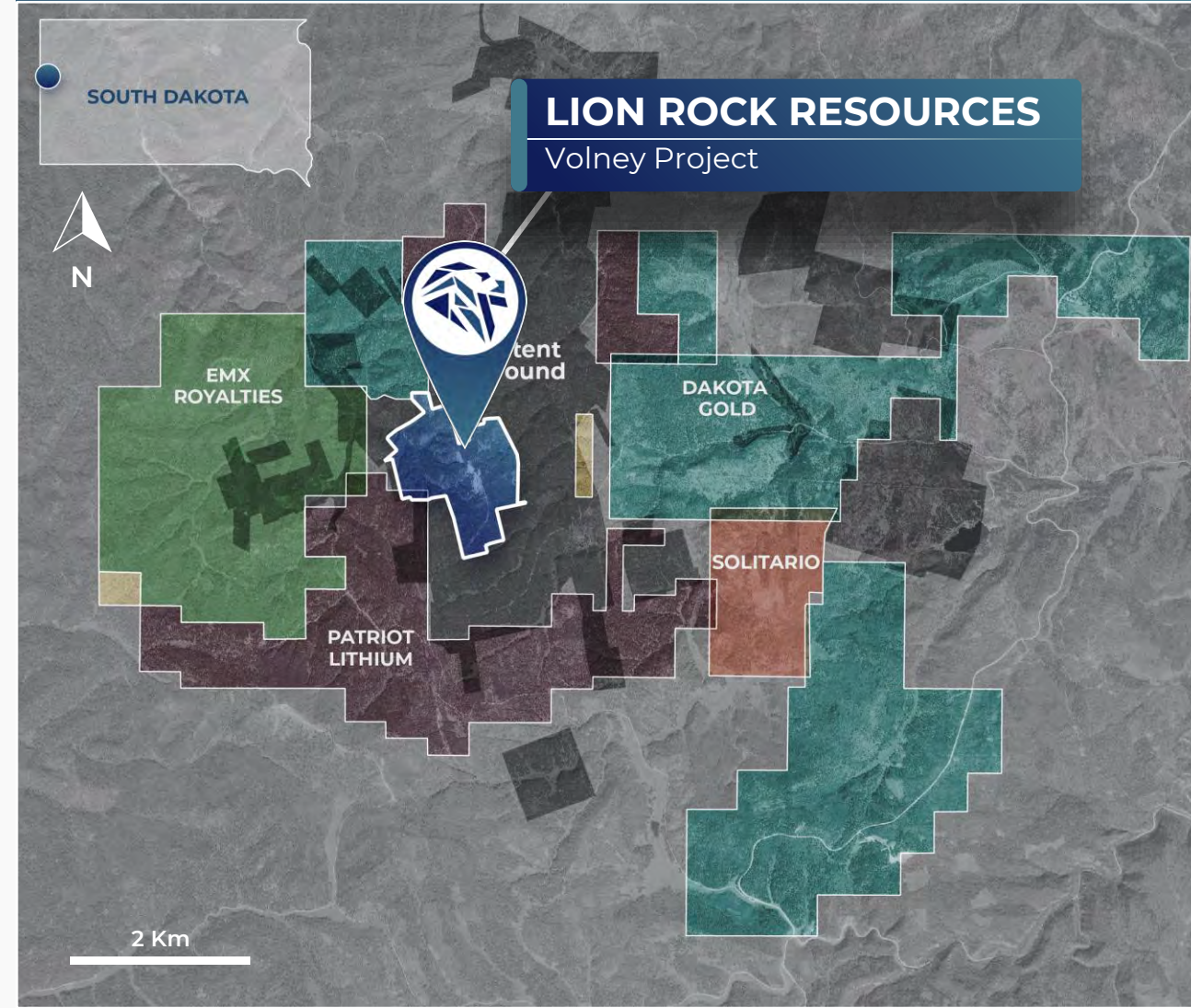
 Year-round **road** access

 Access to **powerlines**

 Access to **water**

 **Rail** networks near by

 Duluth, Minnesota & Thunder Bay, Ontario **shipping ports** are both easily accessible by rail





# Unlocking a Large, Underexplored High-Grade Gold & Lithium System

## Multiple High-Grade Targets Identified

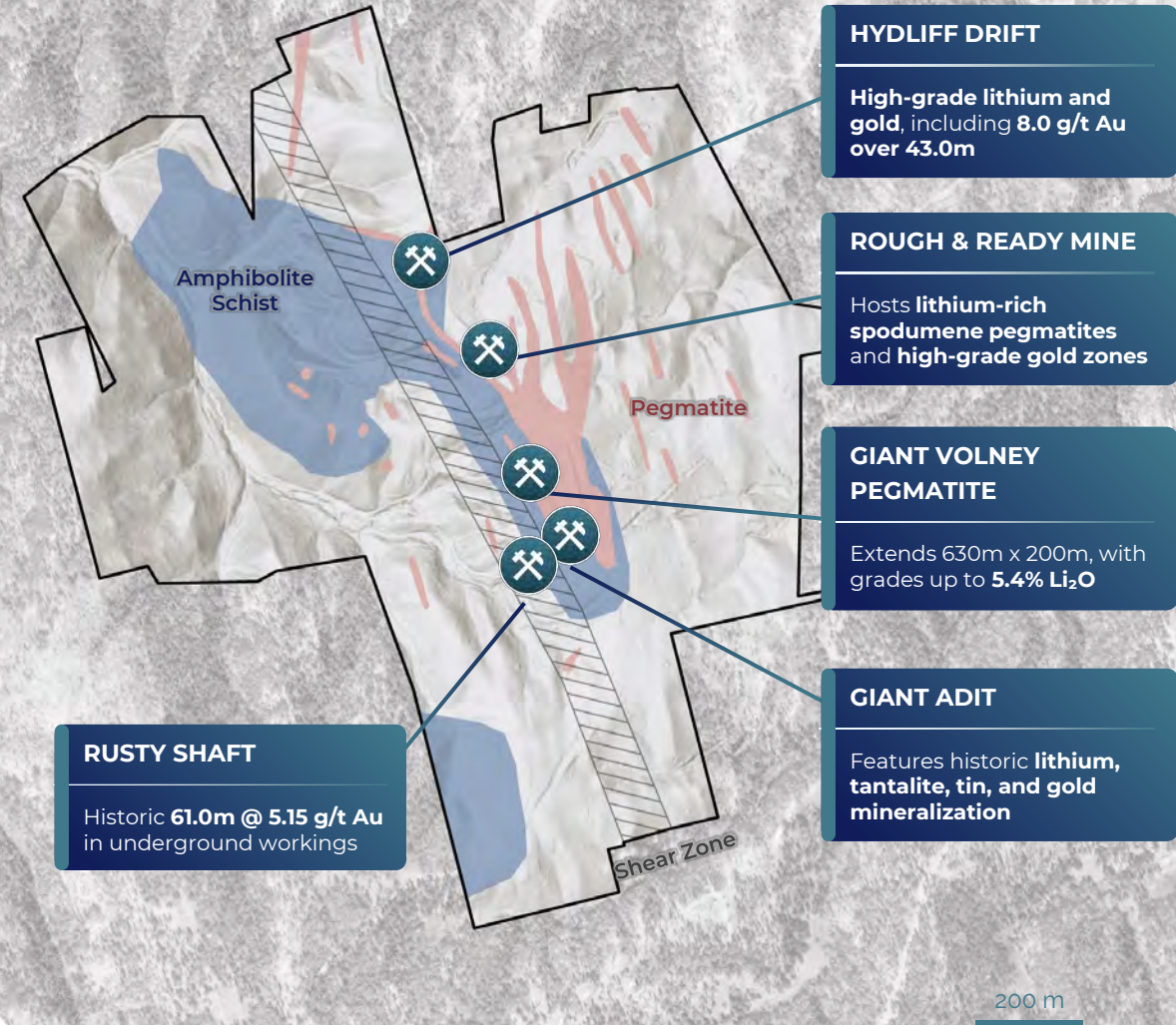
- ▶ Gold & lithium-rich zones span a **district-scale opportunity** with proven high-grade intercepts
- ▶ Historic drilling has **only tested shallow depths (<50m)**, leaving significant discovery potential

## Two Distinct Styles of Mineralization

- ▶ **Shear-Hosted Gold** – Broad mineralized zones with strong high-grade intercepts
- ▶ **Lithium-Tantalum-Tin Pegmatites** – Large spodumene-rich bodies with exceptional  $\text{Li}_2\text{O}$  grades
- ▶ **Both mineralization styles remain open for expansion** along strike and at depth

## Exploration Upside & Next Steps

- ▶ **Limited historic drilling** leaves vast potential for high-grade discoveries
- ▶ **5,000m drill program** in 2025 will target both **gold and lithium expansion zones**
- ▶ **Geophysics, surface sampling, and structural mapping** will refine priority drill targets





# High-Grade LCT Pegmatite Swarm with District-Scale Potential

- ▶ A **635m-long, 200m-wide** LCT pegmatite with high-grade spodumene mineralization exposed at surface
- ▶ Multiple pegmatite bodies, **ranging from 10m and upwards**, converging to form a large-scale lithium zone
- ▶ **LCT pegmatites are the primary source of high-grade hard-rock lithium worldwide**, hosting some of the largest and most economically viable lithium deposits

## Volney Pegmatite Pit Area Average Grades

**2.5% Li<sub>2</sub>O**

▶ **Historic bulk sampling** (10,000 kg)

**3.8% Li<sub>2</sub>O**

▶ Composite of **25 grab samples** from 2025





# Giant Volney Pegmatite Target: High-Grade Lithium with Expansion Upside

- ✓ **Strong Expansion Potential** – Drilled to only **50 m depth**, the deposit remains **open** with a **1.6 km lithium-rich trend** hosting **multiple untested pegmatites**
- ✓ **Exceptional Grades & Drill Results** – Bulk samples returned **up to 4.5% Li<sub>2</sub>O**, while historic drilling confirmed spodumene mineralization, incl. **19.24m @ 1.68% Li<sub>2</sub>O**

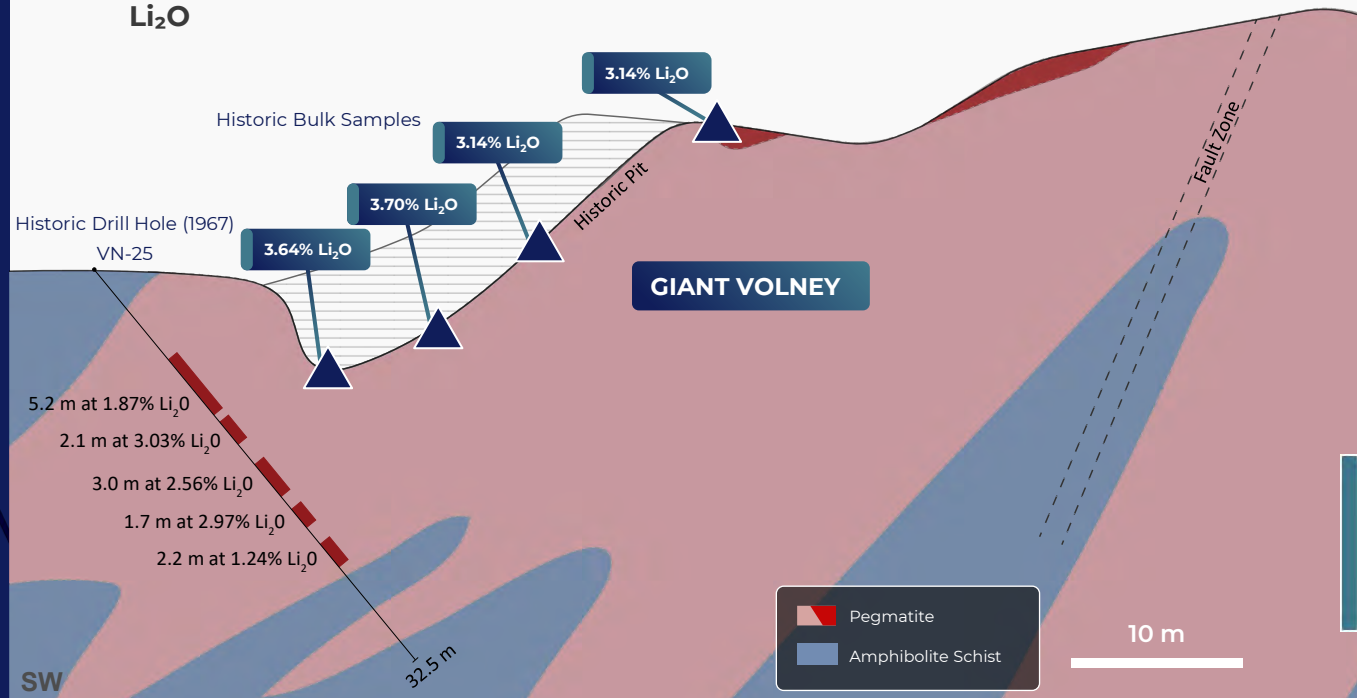
## HISTORIC SAMPLE HIGHLIGHTS

### BULK SAMPLES

- 4.50% Li<sub>2</sub>O
- 4.18% Li<sub>2</sub>O
- 3.70% Li<sub>2</sub>O
- 3.64% Li<sub>2</sub>O

### DRILLING

- 1.47% Li<sub>2</sub>O over 7.6 m incl. **2.90% Li<sub>2</sub>O over 2.4 m**
- 1.68% Li<sub>2</sub>O over 19.24 m incl. **3.03% Li<sub>2</sub>O over 2.13 m** and **2.56% Li<sub>2</sub>O over 2.97 m** and **2.97% Li<sub>2</sub>O over 1.68 m**



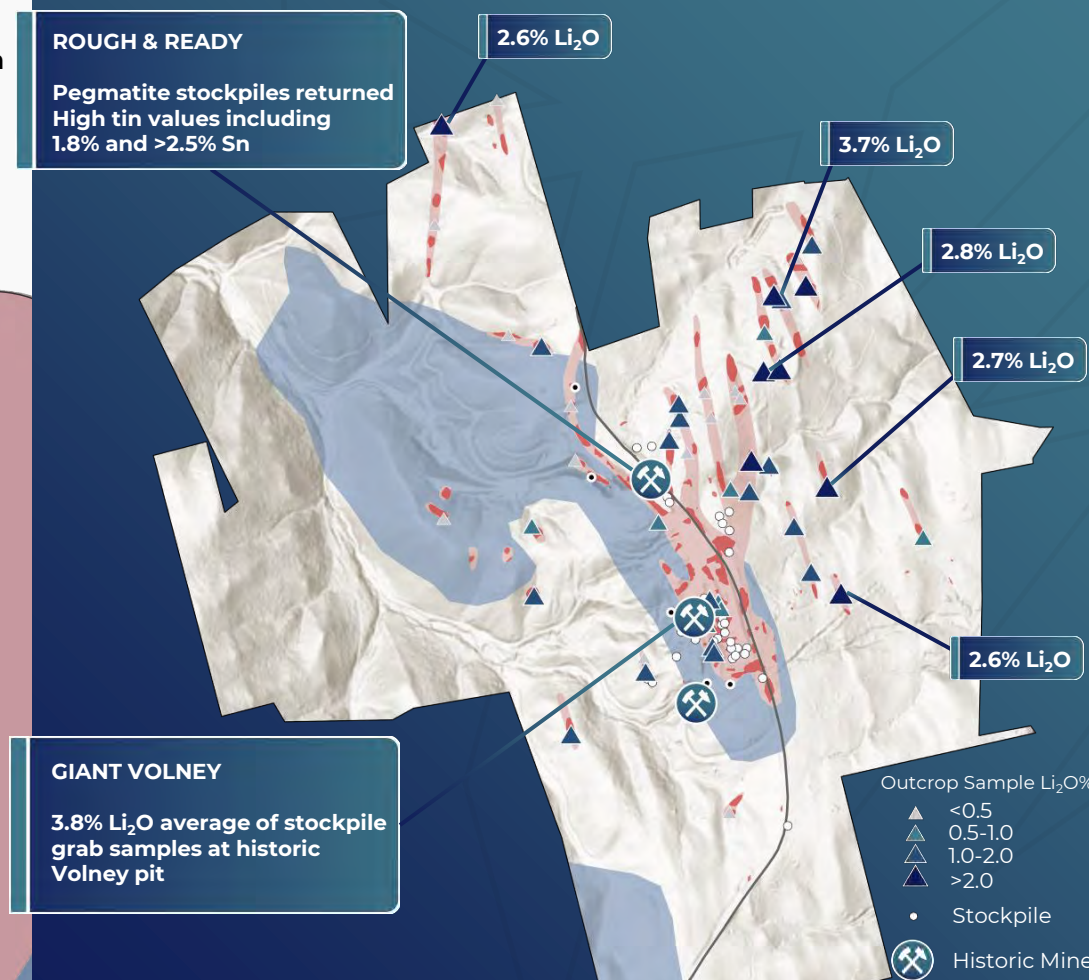
**5.3% Li<sub>2</sub>O**  
▶ in stockpile

**3.7% Li<sub>2</sub>O**  
▶ in outcrop

**>1% Sn**  
▶ in 13 mill piles

## Surface Sampling Proves Expansion Potential

2025 Sampling returned **26 outcrop samples over 1.0% Li<sub>2</sub>O**, confirming multiple high-grade lithium bearing pegmatites at surface across a 1,000 m by 500 m corridor



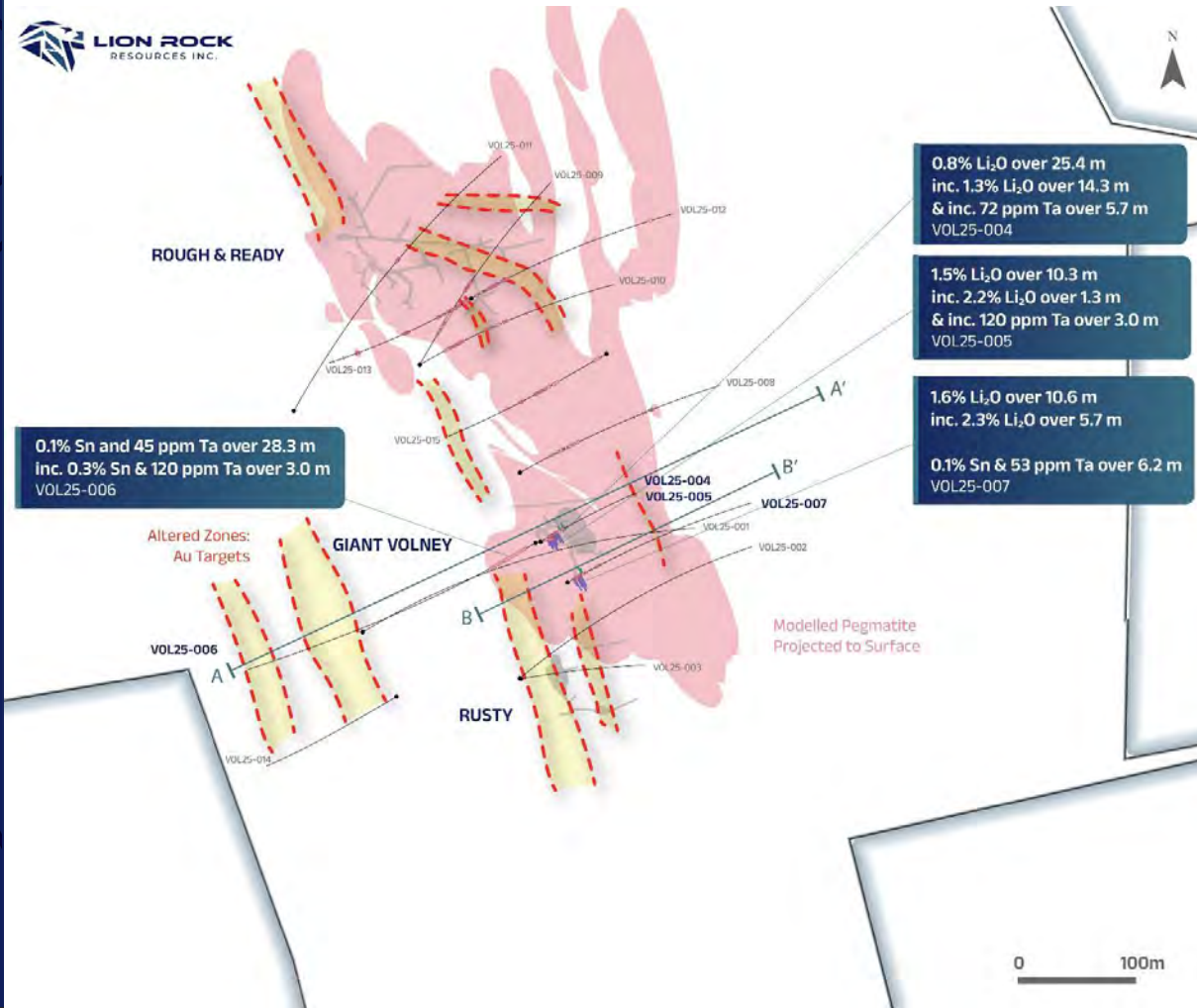
TSXV:ROAR

SW



2026 DRILLING

# Initial Results Show Significant Lithium and Critical Mineral Grades



- **0.8% Li<sub>2</sub>O over 25.4 m**, including **1.3% Li<sub>2</sub>O over 14.3 m** (VOL25-004)
- Assays also returned elevated **gallium** (up to 67 ppm), **rubidium** (up to 3,948 ppm), **cesium** (up to 938 ppm), and **tantalum** (up to 301 ppm)
- Similar Pegmatites Observed More Than 250 m North - Assays Pending
- Collared Directly into Pegmatite; Intersections Represent Partial Thickness

| Hole                   | Intercept   | Length | Li <sub>2</sub> O% | Sn% | Ta ppm |
|------------------------|-------------|--------|--------------------|-----|--------|
| VOL24-004              | 12.2-37.6 m | 25.4 m | 0.8                |     |        |
| <i>including</i>       | 12.2-26.5 m | 14.3 m | 1.3                |     |        |
| <i>&amp; including</i> | 20.4-26 m   | 5.7 m  |                    |     | 72     |
| VOL24-005              | 8.7-19 m    | 10.3 m | 1.5                |     |        |
| <i>including</i>       | 15.5-16.8 m | 1.3 m  | 2.2                |     |        |
| <i>&amp; including</i> | 12.5-15.5 m | 3 m    |                    |     | 120    |
| VOL24-006              | 22.2-50.5 m | 28.3 m |                    | 0.1 | 45     |
| <i>including</i>       | 41.1-44.1 m | 3 m    |                    | 0.3 | 120    |
| VOL24-007              | 7.6-18.2 m  | 10.6 m | 1.6                |     |        |
| <i>including</i>       | 12.5-18.2 m | 5.7 m  | 2.3                |     |        |
|                        | 19.3-25.5 m | 6.2 m  |                    | 0.1 | 53     |



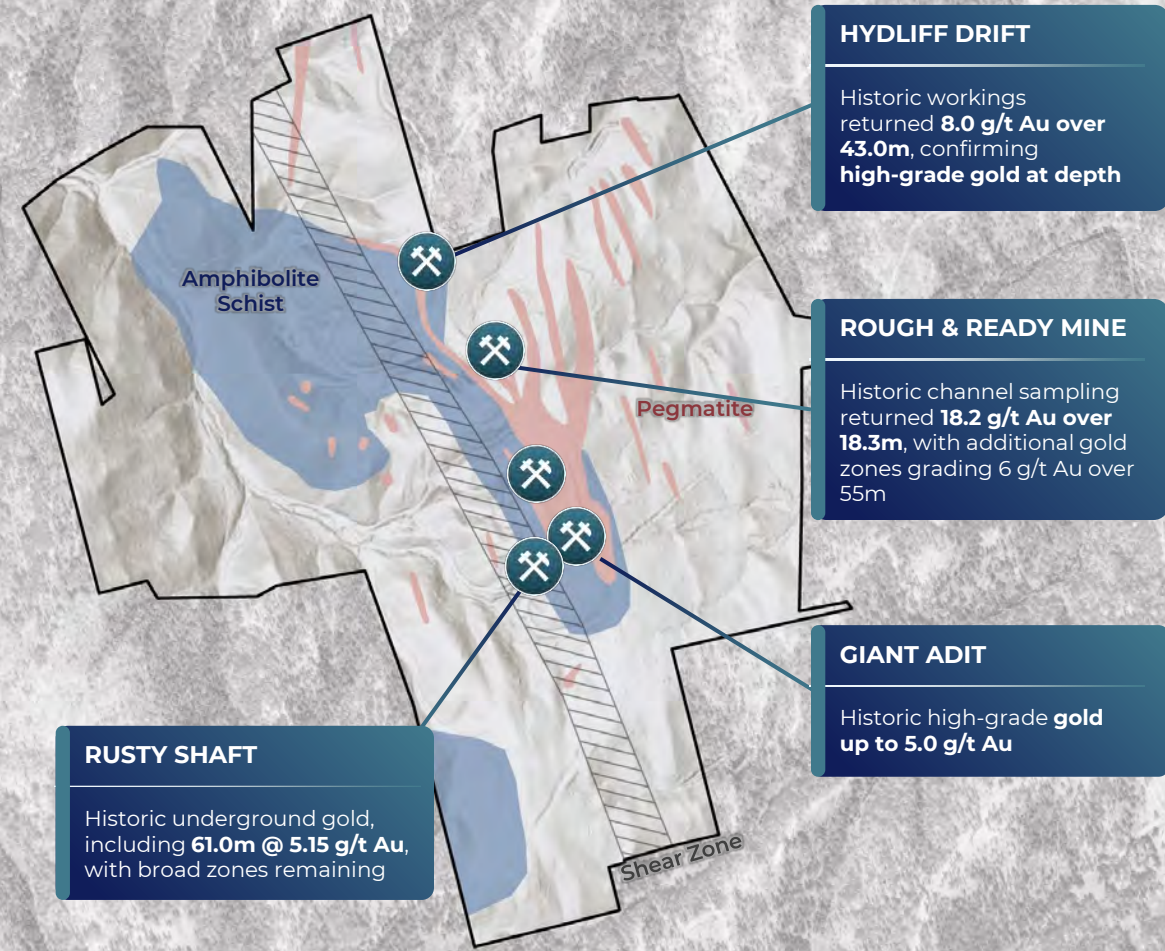
# Extensive High-Grade Gold System with Significant Expansion Potential

Hosts an extensive shear-hosted gold system, measuring **73m wide and 1.6km long**, with intersected high-grade mineralization **at surface**

Historic workings at Rusty Shaft reported grades of **5 g/t – 15 g/t Au over 15-45m**, demonstrating strong high-grade continuity

Shallow historic drilling (**<50m depth**) confirmed broad gold mineralization in all eight holes at Rusty Shaft, leaving major expansion potential

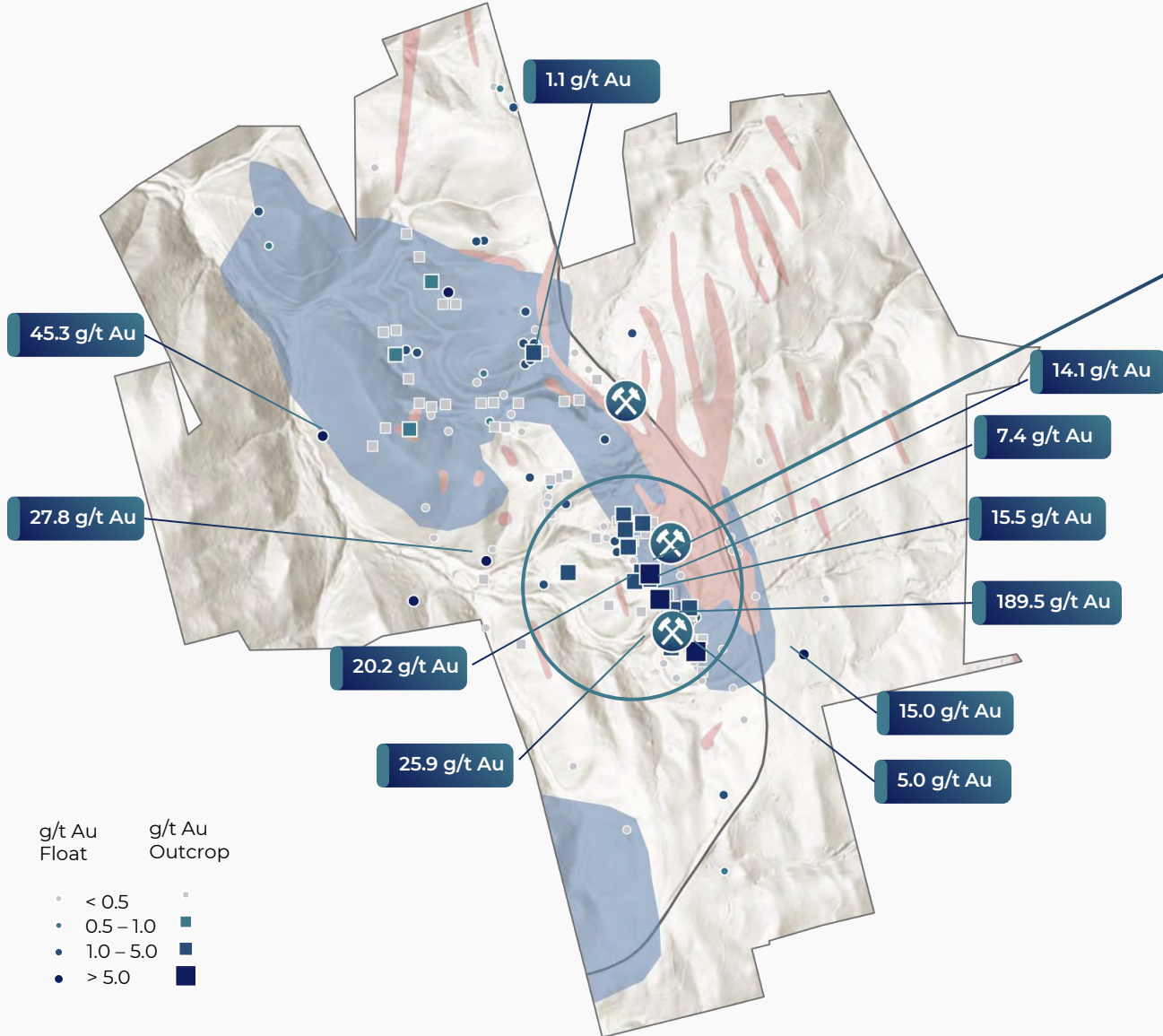
Historic channel sampling at the past-producing Rough & Ready Mine returned **18.2 g/t Au over 18.3m**, highlighting strong near-surface grades



200 m



# Shear Gold Target: High-Grade 2025 Surface Sampling



Up to **189.5 g/t Au** collected in float, and **14.0 g/t Au** in outcrop

- ▶ **20** bedrock samples over **0.5 g/t Au**
- ▶ **41** float samples over **1 g/t Au**

Bedrock sampling has outlined a **260 m shear trend** open along strike



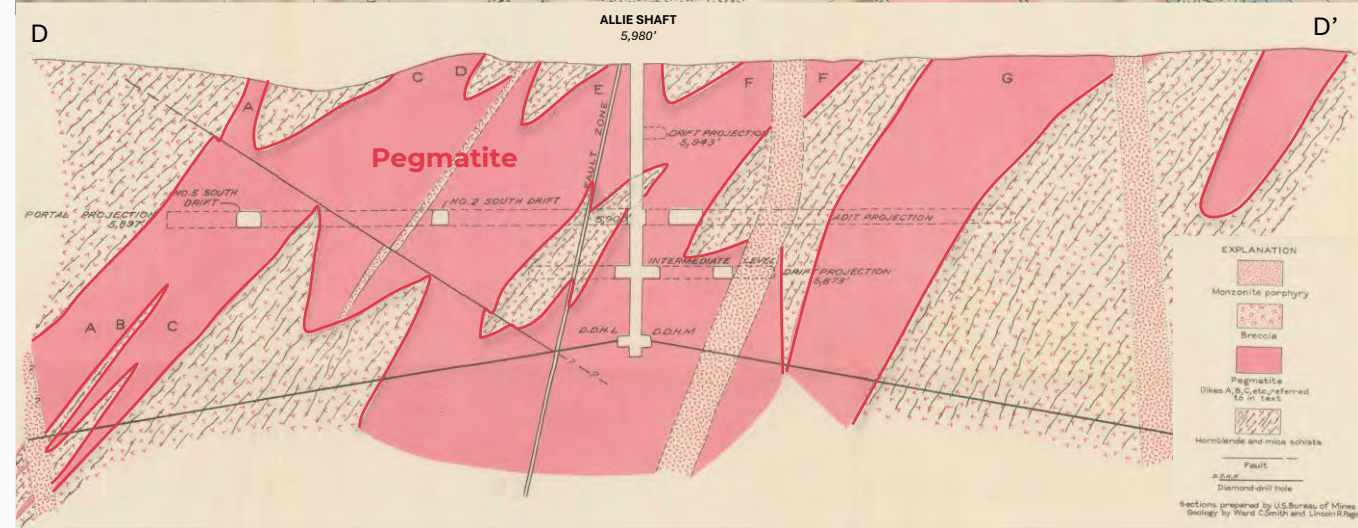
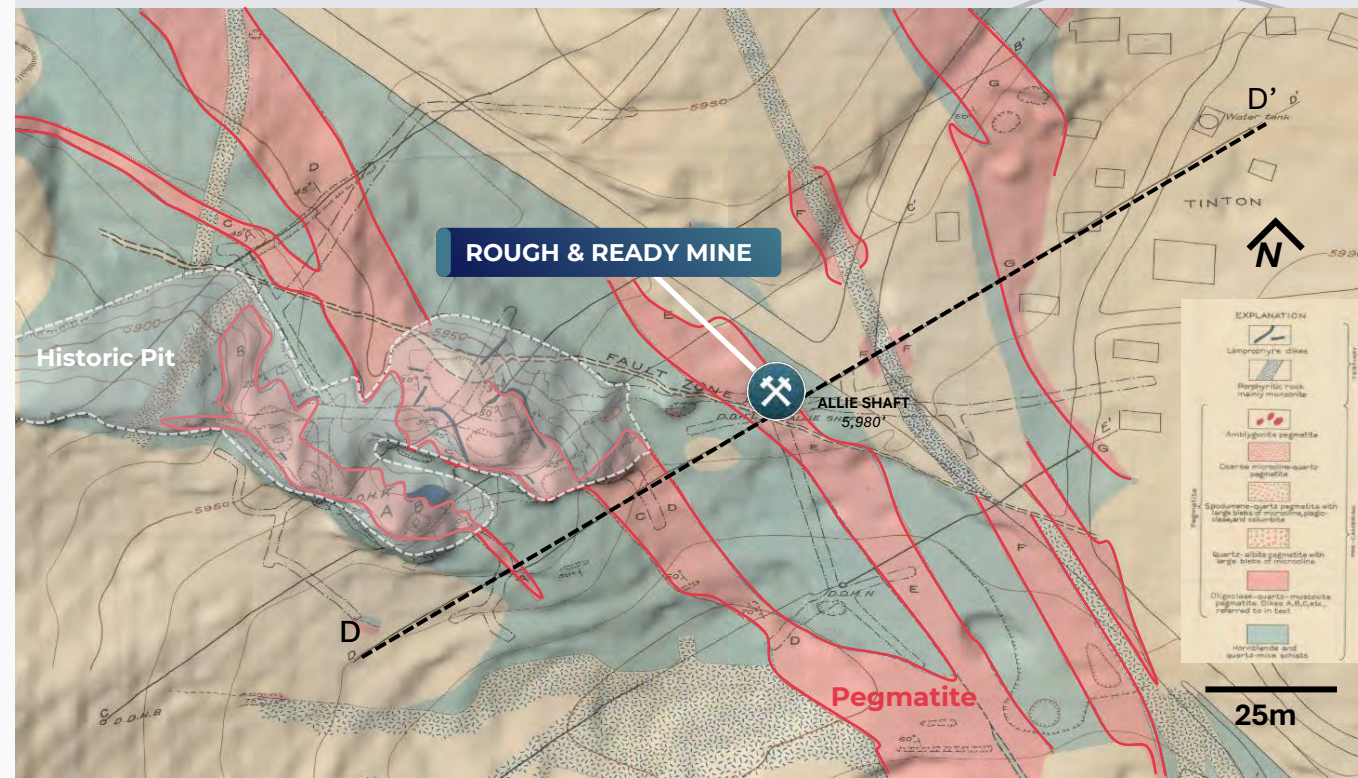
THE VOLNEY PROJECT

# Rough & Ready Mine Target High-Grade Tin, Gold, and Lithium Potential

✓ **Historic Tin Production** – Produced **105,000 lbs of tin (1903–1927)**, including an exceptional **62.5% Sn concentrate** recorded in 1903

✓ **Gold Mineralization** – Historic channel sampling returned **18.2 g/t Au over 18.3m**, with drift sampling confirming **6.0 g/t Au over 55.0m**, hosted in shear structures within amphibolite

✓ **Spodumene-Bearing Pegmatites** – Zoned pegmatites with spodumene indicate **significant untested lithium potential**, on trend with the **high-grade Giant Volney pegmatite**

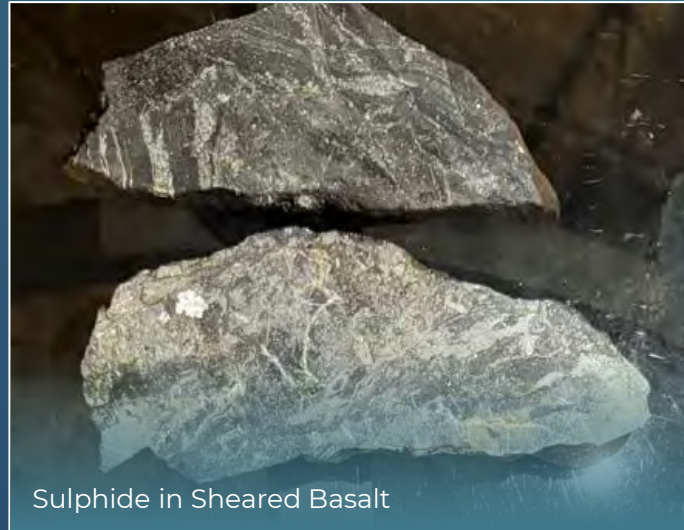




# Site Visit



Giant Volney Pegmatite



Sulphide in Sheared Basalt



Quartz-Spodumene Pegmatite



Sheared Amphibolite

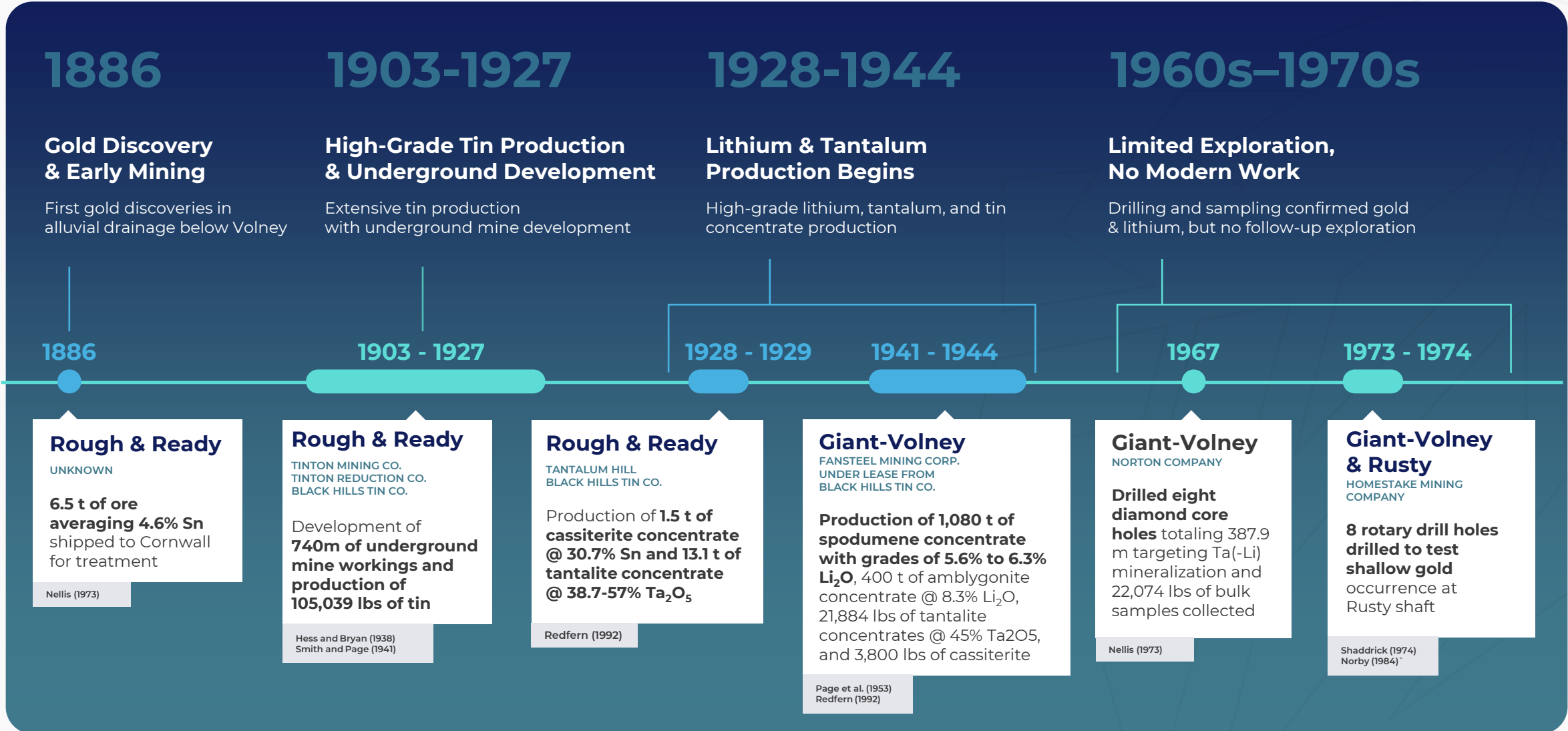


Rough and Ready Historic Workings



# A Legacy of High-Grade Gold, Lithium & Tin Production

TSXV:ROAR





# Work Program

## Q4

### 2024

FOUNDATION FOR EXPLORATION SUCCESS

- ✔ **Project Acquisition**  
(Completed: Oct 11, 2024)
- ✔ **Data Review** – Verification and analysis of historic project data
- ✔ **Target Mapping & Sampling – Pegmatite & gold zone sampling**  
(Completed – results pending)

## Q1-Q3

### 2025

PREPARATION FOR DRILL PROGRAM

- ✔ **Drill Permitting** – Submission and approvals
- ✔ **Geophysics** – High-resolution magnetic survey to refine targets

## Q4

### 2025

INAUGURAL DRILL PROGRAM

- ✔ **5,000m Drill Program Underway** – Testing high-priority gold and lithium zones

## Q1

### 2026

PHASE 2 DRILL PROGRAM

- 🔄 **Assays Pending** – Samples currently undergoing analysis
- ☐ **Expanded Drill Program** – Additional fieldwork and target definition

TSXV:ROAR



LION ROCK

# Capital Structure

TSX:ROAR

| Ticker                     | TSX.V:ROAR |
|----------------------------|------------|
| Share Price*               | \$0.42     |
| Market Cap*                | \$44.9M    |
| Shares Issue & Outstanding | 107.1M     |
| Warrants                   | 55.9M      |
| Options                    | 10.6M      |
| Fully Diluted              | 174.5M     |

\* As of February 20th, 2026



# Why Lion Rock Resources?



## High-Grade Gold & Lithium Potential

**Proven high-grade gold & lithium mineralization** with historic drill results up to **18.2 g/t Au over 18.3m** and **5.4% Li<sub>2</sub>O in spodumene-rich pegmatites**



## Strategic Location & Infrastructure

Located in **South Dakota's Black Hills**, a **mining-friendly jurisdiction** with **road access, power, water, and proximity to active gold operations**



## Untapped Discovery & Expansion Upside

**Limited historic drilling (<50m depth)** leaves significant **expansion potential**, with a **5,000m drill program planned for 2025** targeting priority zones



## Experienced Leadership

**Proven track record** of mineral discoveries, project development, and capital raising, led by a team with **decades of experience in exploration & financing**



# Management & Board of Directors

## R. DALE GINN P.Geo.

President & CEO, Director

- ▶ **30+ years** of experience as a mining executive and geologist, **founding 10+ exploration and mining companies.**
- ▶ Led or was part of the discovery teams for **Gladiator, Hinge, 007, 777, Trout Lake, Edleston, and Tartan Lake deposits.**
- ▶ Helped **generate 10M+ ounces of gold** resources and **C\$500M in capital for exploration** and development.
- ▶ Experience with **Goldcorp, Harmony Gold, Hudbay, Wesmin, San Gold, Bonterra, and Gatling Exploration.**
- ▶ **Led the Bardwell/Boomerang Nickel discovery** near Timmins, Ontario, for Aston Minerals.

## NAV DHALIWAL

Executive Chairman

- ▶ **20+ years of experience** in capital markets, focused on maximizing shareholder value in the mining sector.
- ▶ Built a **global financial network** of institutional investors, family offices, analysts, brokers, and high-net-worth individuals.
- ▶ Long-standing relationships with **major gold and energy metal funds**; raised **over \$500M** for exploration and development.
- ▶ Currently serves as **President, CEO & Director of Renegade Gold, Executive Chairman of Badlands Resources, and Director of Mason Graphite.**

## P. JOSEPH MEAGHER CPA, CA

Director

- ▶ **CFO for multiple publicly listed companies** on the TSX-V and CSE with a background in financial management.
- ▶ **Chartered Professional Accountant (CPA, CA)** and Chartered Director (C.Dir.).
- ▶ **Formerly with Smythe CPA (2005–2011)** as Staff Accountant and Manager.
- ▶ Holds a Bachelor of Commerce from the University of British Columbia.

## LAURENCE FARMER

Independent Director

- ▶ **Legal and financial executive** with over a decade of international experience in M&A, corporate finance, and capital markets.
- ▶ Currently serves as **General Counsel, VP of Strategic Development, and Corporate Secretary** at **Osisko Development Corp.**
- ▶ **Co-Founder and CEO of Electric Elements Mining Corp.,** a privately held critical and precious metals exploration company.
- ▶ Played key roles in **structuring and closing over US\$20B** in mining sector transactions

## DOMINIC VERDEJO

Director

- ▶ **12+ years** of experience in **venture capital markets, corporate development, and mineral exploration.**
- ▶ Specialized in **market strategy, financing, and corporate growth**, holding director and senior officer roles in public companies.
- ▶ Extensive work in building and financing successful mineral exploration projects.

## RICK BOULAY

Director

- ▶ **40+ years** of experience in **exploration, mining, and project financing** across Canada and internationally.
- ▶ 15 years in mining and infrastructure financing, working with **Bank of Montreal, Royal Bank of Canada, and Bank of Tokyo.**
- ▶ **Arranged financing for mining projects,** nuclear reactors, pipelines, and offshore oil platforms.
- ▶ Extensive experience in public company management and financing in Canada and the U.S.



**LION ROCK**  
RESOURCES INC.

TSXV:ROAR | FSE: KGB | OTCQB:LRRIF

For more information, please contact:

✉ [info@lionrockresources.com](mailto:info@lionrockresources.com)

☎ +1-604 678 5308

[LionRockResources.com](http://LionRockResources.com)