



**LION ROCK**  
RESOURCES INC.

# Building a US Critical Minerals Powerhouse

Corporate Presentation – June 2026

TSXV:ROAR | FSE: KGB | OTCQB:LRRIF



## Forward-Looking Statements

Certain statements contained herein may constitute “forward-looking information” within the meaning of Canadian securities legislation. Forward-looking information is often, but not always, identified by the use of words such as “anticipate”, “plan”, “estimate”, “expect”, “may”, “will”, “intend”, “should”, “potential”, “indicative” and similar expressions. Forward-looking information involves known and unknown risks, uncertainties and other factors that may cause actual results or events to differ materially from those anticipated in such forward-looking information. Such forward-looking information is based on the current expectations of management of the Company. The Company’s actual results could differ materially from those anticipated in this forward-looking information as a result of risks and uncertainties, including without limitation risks and uncertainties inherent in the exploration and development of mineral properties, fluctuations in commodity prices, counterparty risk, market conditions, regulatory decisions, competitive factors in the industries in which the Company operates, prevailing economic conditions, changes to the Company’s strategic growth plans, and other factors, many of which are beyond the control of the Company. The Company believes that the expectations reflected in the forward-looking information are reasonable, but no assurance can be given that these expectations will prove to be correct and such forward-looking information should not be unduly relied upon. In making the forward-looking statements herein, the Company has applied several material assumptions. Any forward-looking information contained herein represents the Company’s expectations as of the date of publication and is subject to change after such date. The Company disclaims any intention or obligation to update or revise any forward-looking information whether as a result of new information, future events or otherwise, except as required by applicable securities legislation.

The technical content of this news release has been reviewed and approved by Carl Ginn, P.Geo., consultant to the Company and a Qualified Person pursuant to National Instrument 43-101.



# Advancing Towards Critical Minerals Production in South Dakota



## Commercial-Grade Critical Minerals

Lithium, tin, and tantalum confirmed by drilling, including grades of 2.3% Li<sub>2</sub>O and 0.3% Sn. Gallium identified as potential byproduct.



## Rapid Path to Production

Past-producing asset on 142 ha of **private land** in a pro-mining jurisdiction. No federal permitting required.



## Capital Efficient

Existing infrastructure, onsite power, equipment, and workforce availability in an **established mining district**.



## Low-Risk Strategy

Mine-to-market approach: shallow mineralization, potential for Direct Shipping Ore (DSO), and onsite concentrate production.



## Experienced Leadership

Management team with 30+ years in exploration and mining. 10M+ oz Au in resources generated. Over C\$500M raised.



## Gold Exploration Upside

New gold discovery spanning **500 m x 400 m x 200 m** open in all directions for expansion. Up to 5.0 g/t Au.



# Located in a World-Class Mining District

## ✔ Private Land, State Jurisdiction

142 ha of private land with no federal permitting risk. State-level permitting only.

## ✔ Year-Round Road Access

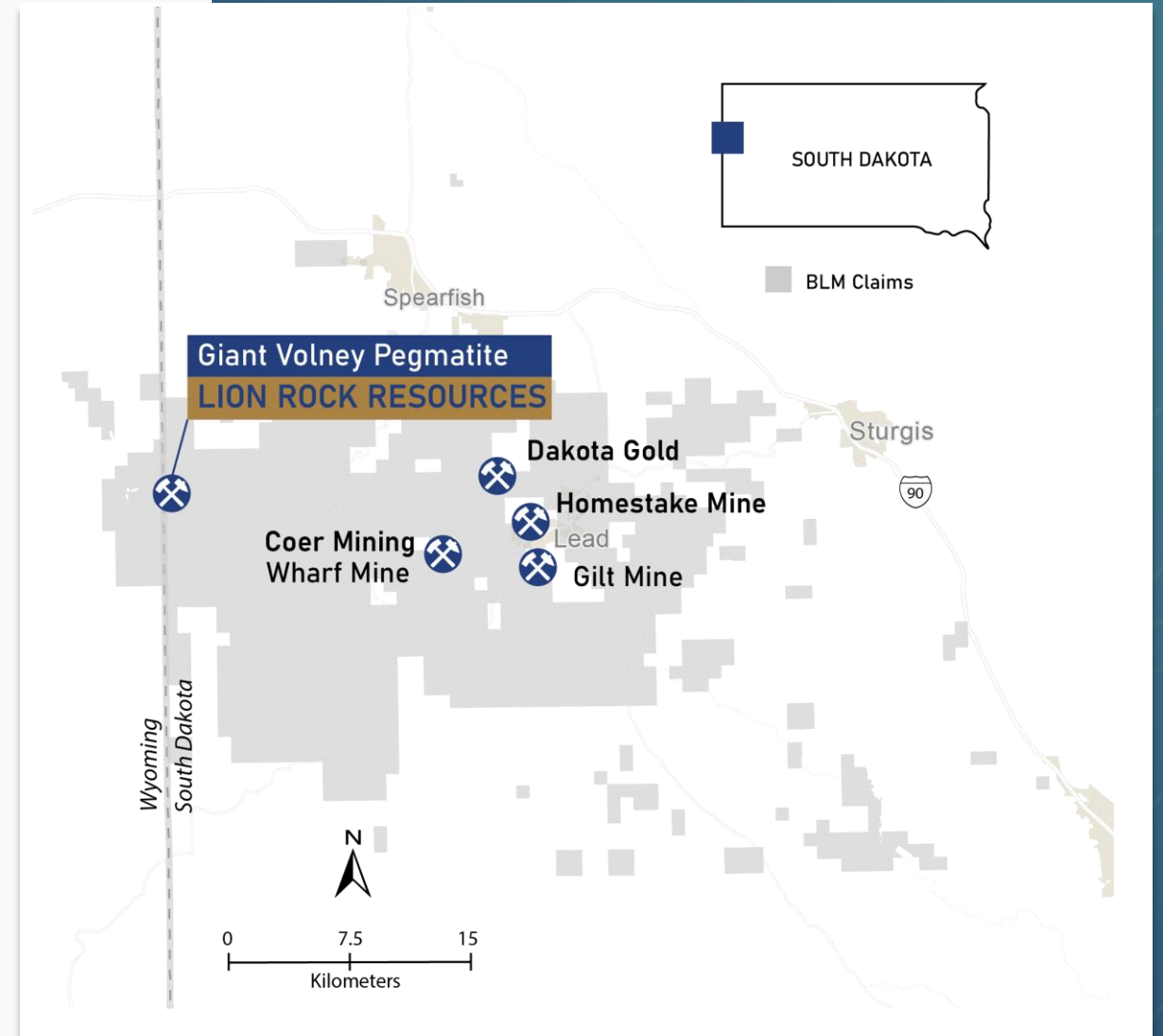
All-season road runs directly through the property. 70 miles to Rapid City rail depot.

## ✔ Pro-Mining Jurisdiction

South Dakota ranks among the top US states for mining policy. Established regulatory framework with efficient permitting timelines.

## ✔ Proven Neighbors

Homestake Mine: 40M+ oz Au produced. Coeur Mining (NYSE: CDE): ~\$19.7B market cap. Dakota Gold (NYSE: DC): ~\$670M market cap.





# Positioned to Serve US Critical Mineral Demand

## Lithium\*

**Market: \$32.4B**  
CAGR: 14.5%

**Used For:**

Energy storage, EVs, batteries

**US Import Reliance:**  
~30% of requirements

## Tin\*

**Market: \$7.5B**  
CAGR: 3.4%

**Used For:**

Electronics, soldering, chemicals

**US Import Reliance:**  
~75% of requirements

## Tantalum\*

**Market: \$5.0B**  
CAGR: 6.2%

**Used For:**

Defense, electronics, aerospace

**US Import Reliance:**  
~100% of requirements

## Gallium\*

**Market: \$2.5B**  
CAGR: 8%

**Used For:**

Defense, radar, 5G infrastructure

**US Import Reliance:**  
~100% of requirements

**↑ Gold Upside\*** Gold spot price exceeded \$5,500/oz in Q1 2026. The Black Hills hosts one of North America's most historically significant gold districts (Homestake Mine: 40M+ oz). Gold mineralization at Volney provides potential revenue diversification alongside critical minerals.

\*Drill confirmed.

Sources: USGS MCS 2026, Grand View Research, Straits Research, Credence Research.



# Drilling at the First Pegmatite Target

## Open

L:300m x W:100m  
x D:150 Strike

Large strike, Open in all directions

## 15

Drill Holes Completed

~3,600 m of Phase 1 drilling completed on schedule and budget

## 0 m

Depth to Mineralization

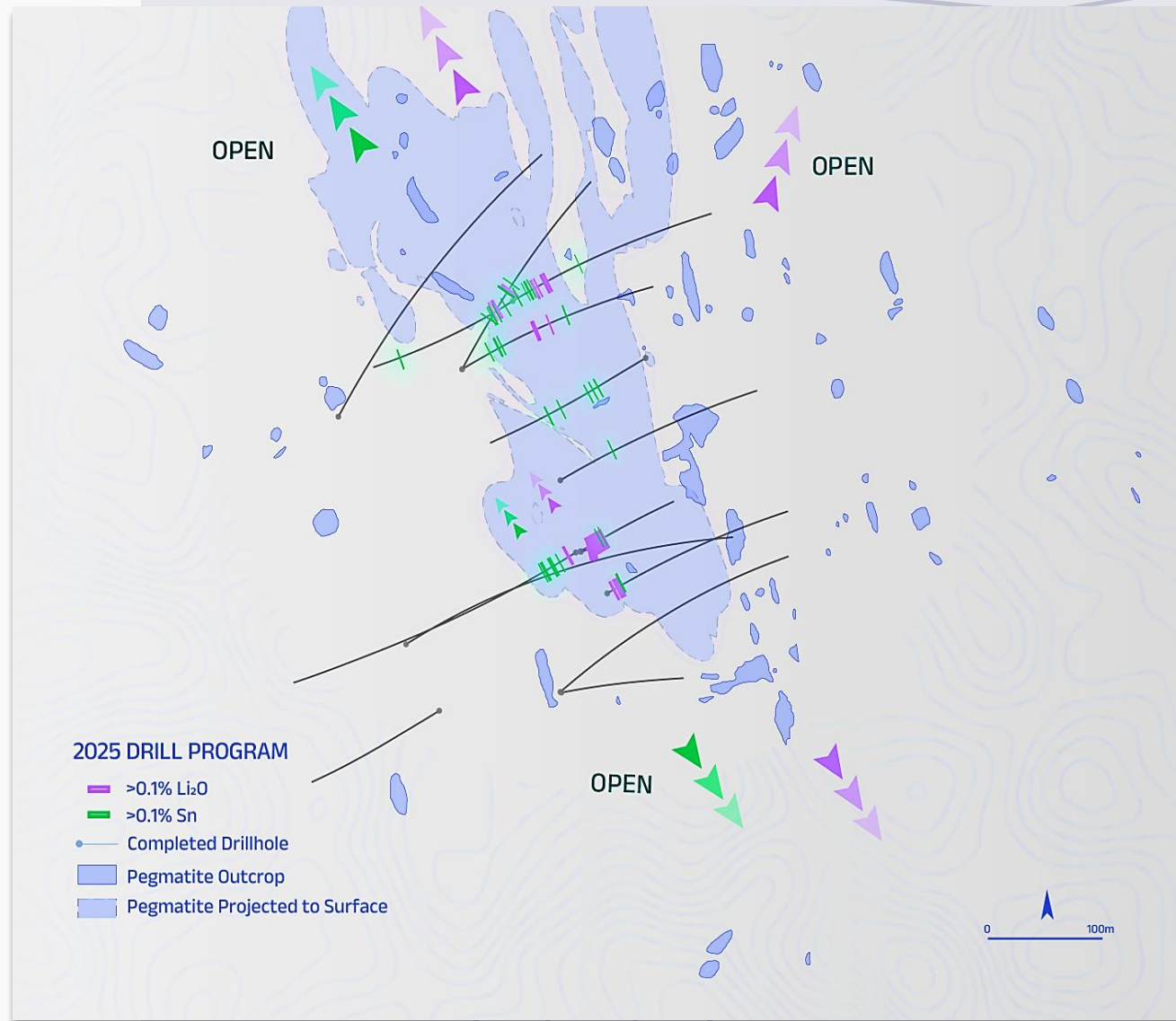
Mineralization intersected from surface across multiple holes

## Critical Mineral Grade Highlights

- **2.3% Li<sub>2</sub>O** over 5.7 m (VOL24-007)
- **0.8% Li<sub>2</sub>O** over 25.4 m from 12.2 m depth (VOL24-004)
- **0.3% Sn** over 3.0 m (VOL24-006)
- **3,715 ppm Ta<sub>2</sub>O<sub>5</sub>** over 1.0 m (VOL25-013)
- **788 ppm Ta<sub>2</sub>O<sub>5</sub>** over 5.9 m (VOL25-010)
- **1,605 ppm Ta<sub>2</sub>O<sub>5</sub>** over 2.0 m (VOL25-010)

## First of Multiple Targets

Interpretation of drill results, supported by recent surface sampling, has confirmed **additional mineralized pegmatite** targets along strike and across the broader system, confirming potential for multiple zones across the property.





# Multiple Regional Targets

## Targets Identified to Date

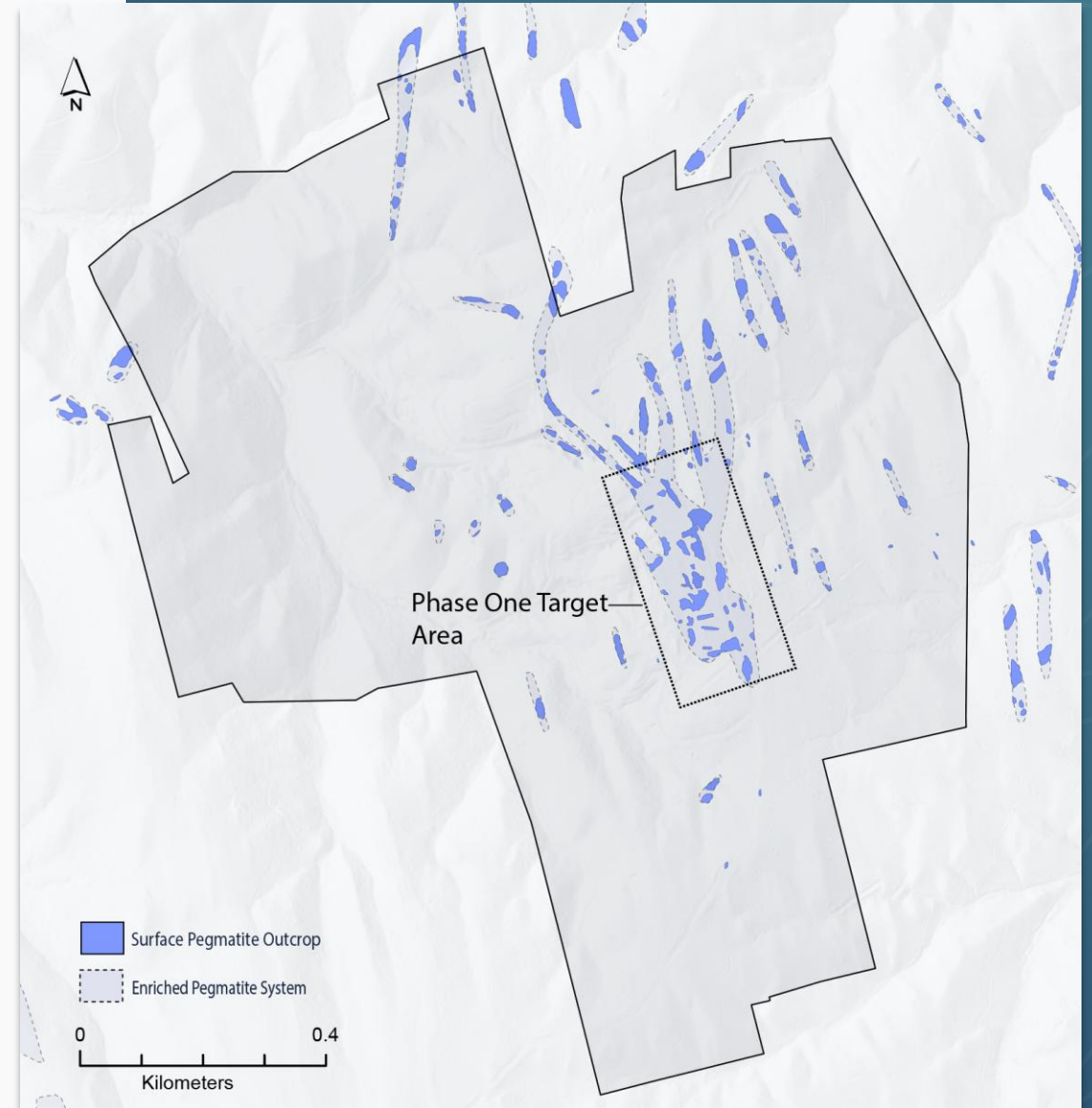
Phase 1 drilling tested just one of multiple pegmatite targets at Volney. Drill results and surface sampling have since identified additional mineralized occurrences along strike and across the broader property, pointing to the potential for a property-wide system.

## Metallurgy and field program underway

Metallurgical test work is underway on Phase 1 drill core and bulk samples collected from field work. Results will help characterize processing potential and identify **high-priority zones** for follow-up drilling.

## Historic Production From Just One Zone

All historic production at Volney came from a single zone on the property, delivering cassiterite concentrate grading **30.7% Sn**, tantalite concentrate at **38.7-57% Ta<sub>2</sub>O<sub>5</sub>**, and spodumene concentrate at **5.6-6.3% Li<sub>2</sub>O**. If a property-wide mineralized system is confirmed, the mined area to date represents only a fraction of the project's potential.





# How Our Grades Compare

## Lithium (% Li2O)

Project	Best Grade	Over
Lion Rock, Volney	2.3%	5.7 m
Lion Rock, Volney	0.8%	25.4 m
Piedmont Lithium, Carolina	1.08% (MRE avg)	44.2 Mt
Li-FT Power, YLP	1.65%	17 m
<i>Commercial Threshold</i>	<i>~0.8 - 1.0%</i>	<i>Resource avg</i>

## Tantalum (ppm Ta2O5)

Project	Best Grade	Over
Lion Rock, Volney	3,715 ppm	1.0 m
Lion Rock, Volney	788 ppm	5.9 m
Round Top, TX (USA Rare Earth)	67.2 ppm (MRE avg)	Resource
<i>Commercial Threshold</i>	<i>~150 ppm</i>	

## Tin (% Sn)

Project	Best Grade	Context
Lion Rock, Volney	0.3%	3.0 m interval
<i>No active US tin mines</i>	<i>n/a</i>	<i>100% import reliant</i>
<i>Commercial Threshold</i>	<i>~0.3 - 0.5%</i>	<i>Lode deposit cutoff</i>

### Key Takeaway:

Phase 1 drill intercepts returned mineralization grades **at or above recognized commercial thresholds** and among the highest reported for any US domestic critical minerals project.

Volney grades reflect individual drill intercepts and are not directly comparable to resource estimate averages, but early results **position the project competitively** within a limited US peer group.



# Capital-Friendly Route to Production

## Shallow System Supports Open Pit

Mineralization starts at surface with largest intervals less than 40 m depth. **Potential for bulk mining** minimizes CAPEX and accelerates time to production.

## Multiple Routes To Production

Near-surface, high-grade pegmatite material represents a potential **direct-shipping ore (DSO)** scenario, the fastest route to production.

Mineralized material could be transported directly to processing facilities without the need for an on-site plant, significantly reducing upfront capital requirements.

## Infrastructure In Place

Potential to produce concentrate on site using **existing power, equipment, and infrastructure**. Eliminates transportation costs for raw ore, improves margins through a higher-value product, and expands the pool of potential downstream buyers.





# A New Gold Discovery

**Multiple**

Distinct Zones  
All open for expansion

**500m**

Strike Length  
Confirmed and growing

**200m**

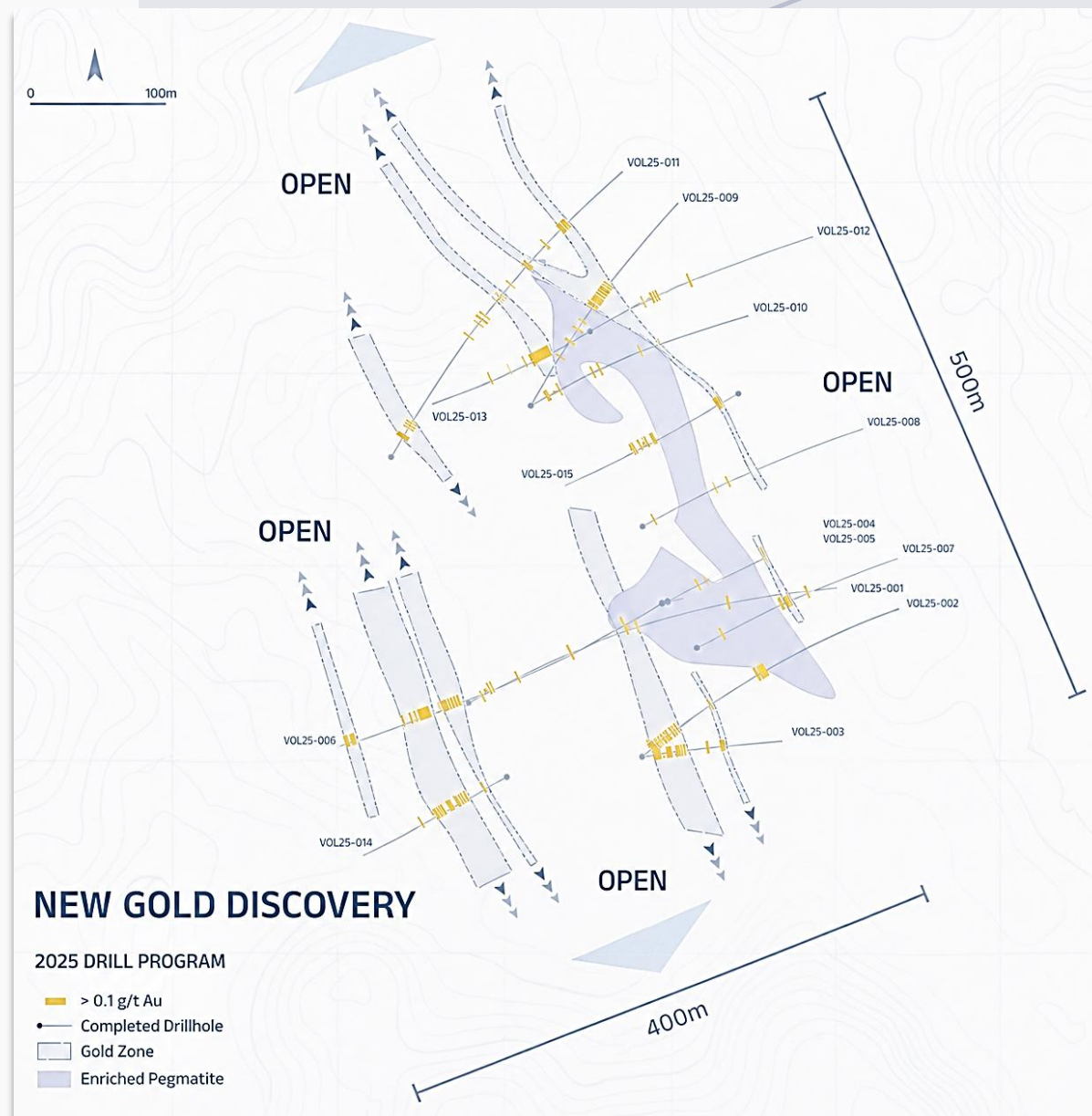
Vertical Depth  
With 400 m width

## Select Gold Results

- **10.9 m @ 2.0 g/t Au** within 24.8 m @ 0.8 g/t Au (VOL25-006)
- **4.6 m @ 2.1 g/t Au** within 36.5 m @ 0.5 g/t Au (VOL25-002)
- **23.2 m @ 1.1 g/t Au** (VOL25-013)
- **2.1 m @ 5.0 g/t Au** (VOL25-014)
- **1.6 m @ 4.1 g/t Au** (VOL25-009)
- **1.0 m @ 3.4 g/t Au** (VOL25-010)

### Stacked Zones:

VOL25-006 and VOL25-009 intersected multiple intervals at different depths within the same hole, indicating continuity favourable for resource development.





# Why Volney, Why Now



## WORK COMPLETED

Phase 1 drilling (15 holes, ~3,600 m) completed on schedule and budget. Lithium, tin, and tantalum confirmed at or above commercial thresholds. New gold discovery spanning 500 m x 400 m x 200 m, open in all directions. Met work and field programs underway.



## FEDERAL TAILWINDS

Critical minerals designated a national security priority. Multiple executive orders to accelerate domestic production. \$500M+ DOE funding for processing and battery materials. US remains 75–100% import reliant for tin and tantalum.



## PROVEN PRODUCTION HISTORY

All historic production from a single zone:

- **5.6–6.3% Li<sub>2</sub>O** spodumene concentrate
- **30.7% Sn** cassiterite concentrate
- **38.7–57% Ta<sub>2</sub>O<sub>5</sub>** tantalite concentrate

The broader property remains largely untested.



## PRIVATE SECTOR MOMENTUM

Tesla's lithium refinery in Texas reached full operation in January 2026, processing spodumene into battery-grade lithium hydroxide. Domestic processors are actively building capacity to secure US-sourced feedstock.

Key Highlights

Historically Producing Property

Gold & Commercial-Grade Critical Minerals Confirmed

Positioned for US Supply Chain Demand



# Work Program

TSXV:ROAR

**Q4**  
**2025**

---

PHASE 1 DRILL PROGRAM

- ✓ Commenced 15-hole (5,000m) Phase 1 Drill Program – Testing high-priority critical mineral and gold zones.

**Q1**  
**2026**

---

PHASE 1 RESULTS

- ✓ **Completion of 15-hole program** – on schedule and on budget. Drill core samples submitted to lab for analysis.
- ✓ **Assays** – Results received from four critical mineral holes.

**Q2**  
**2026**

---

PHASE 2 PLANNING

- Planning for Phase 2 Drill Program** – Permitting application and target definition.
- Metallurgical Testing** – preliminary work for critical minerals.

**Q3/4**  
**2026**

---

PHASE 2 DRILL PROGRAM

- Expansion Drilling** – Aggressive follow up drilling to expand on success of phase 1.
- Discovery Drilling** – Testing of new high priority targets along trend of existing known mineralization.



LION ROCK

# Capital Structure

TSX:ROAR

Ticker	TSX.V:ROAR
Share Price*	\$0.24
Market Cap*	\$27.8M
Shares Issued & Outstanding	115.9M
Warrants	47.5M
Options	10.6M
Fully Diluted	174.0M

\* As of June 3rd, 2026



# Management & Board of Directors

## R. DALE GINN P.Geo.

President & CEO, Director

- ▶ **30+ years** of experience as a mining executive and geologist, **founding 10+ exploration and mining companies.**
- ▶ Led or was part of the discovery teams for **Gladiator, Hinge, 007, 777, Trout Lake, Edleston, and Tartan Lake deposits.**
- ▶ Helped **generate 10M+ ounces of gold** resources and **C\$500M in capital for exploration** and development.
- ▶ Experience with **Goldcorp, Harmony Gold, Hudbay, Wesmin, San Gold, Bonterra, and Gatling Exploration.**
- ▶ **Led the Bardwell/Boomerang Nickel discovery** near Timmins, Ontario, for Aston Minerals.

## NAV DHALIWAL

Executive Chairman, Director

- ▶ **20+ years of experience** in capital markets, focused on maximizing shareholder value in the mining sector.
- ▶ Built a **global financial network** of institutional investors, family offices, analysts, brokers, and high-net-worth individuals.
- ▶ Long-standing relationships with **major gold and energy metal funds**; raised **over \$500M** for exploration and development.

## P. JOSEPH MEAGHER CPA, CA

CFO

- ▶ **CFO for multiple publicly listed companies** on the TSX-V and CSE with a background in financial management.
- ▶ **Chartered Professional Accountant (CPA, CA)** and Chartered Director (C.Dir.).
- ▶ **Formerly with Smythe CPA** (2005–2011) as Staff Accountant and Manager.
- ▶ Holds a Bachelor of Commerce from the University of British Columbia.

## LAURENCE FARMER

Director

- ▶ **Legal and financial executive** with over a decade of international experience in M&A, corporate finance, and capital markets.
- ▶ Currently serves as **General Counsel, VP of Strategic Development, and Corporate Secretary** at **Osisko Development Corp.**
- ▶ **Co-Founder and CEO of Electric Elements Mining Corp.**, a privately held critical and precious metals exploration company.
- ▶ Played key roles in **structuring and closing over US\$20B** in mining sector transactions.

## DOMINIC VERDEJO

Director

- ▶ **12+ years** of experience in **venture capital markets, corporate development, and mineral exploration.**
- ▶ Specialized in **market strategy, financing, and corporate growth**, holding director and senior officer roles in public companies.
- ▶ Extensive work in building and financing successful mineral exploration projects.

## RICK BOULAY

Director

- ▶ **40+ years** of experience in **exploration, mining, and project financing** across Canada and internationally.
- ▶ 15 years in mining and infrastructure financing, working with **Bank of Montreal, Royal Bank of Canada, and Bank of Tokyo.**
- ▶ **Arranged financing for mining projects**, nuclear reactors, pipelines, and offshore oil platforms.
- ▶ Extensive experience in public company management and financing in Canada and the U.S.



# LION ROCK

RESOURCES INC.

Phase 2 Drilling Planning Underway

For more information, please contact:

✉ [info@lionrockresources.com](mailto:info@lionrockresources.com)

☎ +1-604 678 5308

[LionRockResources.com](http://LionRockResources.com)